

Instruction Manual

Antenna Mast

MobileMast™ and TeleMast™

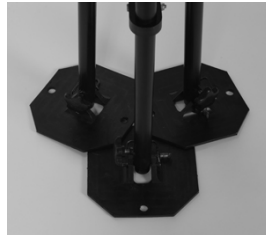


AntennaMast Inc.

Caution! Contact with overhead wires or power lines can cause serious bodily injury or death



Mast Section



Base Plates



4 Pt Guy Collar



**OSMM-SA-32
depicted**



**Tripod In
Nested
Position**

1. Attach The Base Plates To Tripod

A. Attach to tripod



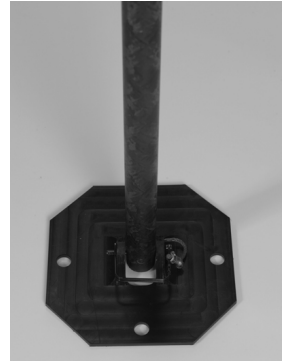
Retrieve 3 base plates and attach them to the bottom of the nested legs using the hitch pin attached to the base plate.

Hitch pin



Depending on the system, base plates will be either steel or UHMW

B. Attach to base pole



Retrieve the last base plate and attach it to the base pole using the hitch pin attached to the base plate.

2. Setting The Tripod

A. Open tripod



Open the tripod making sure that the base plates are flat on the ground and that the lower collar is fully depressed in a downward position. The rotational axis of the base plate should be toward the center.



B. Insert 1 Mast Section



Insert one mast section from the top and secure in place using the turn handle on the lower collar.

C. Attach Guy Collar and guy ropes

Attach guy collar to mast section near the top and attach the guy ropes as depicted. At this time you may mount your device either just above or below the guy ropes.



Three Point Guy Collar

Three Point Guy Collar with guy ropes attached



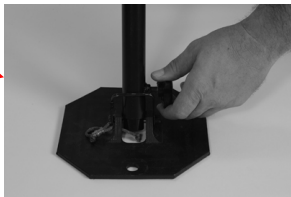
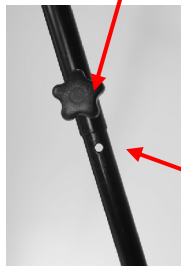
Mount your device either just above or below the guy collar

D. Extend tripod

Extend the tripod by releasing the turn knobs on the nested legs. Lift until the tripod lower collar is approximately chest level.



Turn knobs



The pre-drilled holes in the nested leg are for visual reference only and are used in leveling the tripod. Do not extend the nested legs beyond this point or attempt to set the turn knob screw into the hole.

3. Level The Tripod

A. Level the tripod



Pre-drilled holes

Bubble level

The pre-drilled holes on each nested leg can be used as guides for leveling the tripod. Once the tripod is generally level minor adjustments can be made on each leg to achieve more accuracy.

B. Use bubble level



4. Staking The Tripod

Prior to staking the tripod it is important to make sure that the tripod is as level as possible. If the tripod is not level, as mast height increases the leaning of the mast will become increasingly obvious. The tripod needs to be raised high enough to permit the insertion of center mast poles through the lower collar. The nested legs are slightly longer to permit leveling of the tripod on uneven terrain.

Important! Use ground stakes to secure any mast system deployed above 12 feet

A. Stake the tripod



Warning! Be mindful of buried cables when staking the mast.

Once the tripod is level use the 18" ground stakes to secure each leg of the tripod. Ground stakes should be driven in at an angle toward the center of the mast.

Staking the tripod increases the overall stability of the mast and is mandatory when deploying a mast above 12 feet or when guying is required.

5. Inserting Center Mast Poles

A. Insert center mast poles



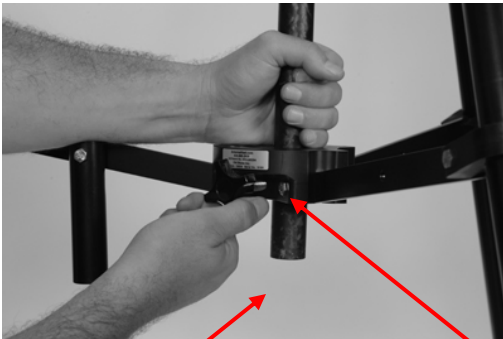
Insert each center mast section through the bottom of the lower collar. It may be necessary to loosen the turn handle of the lower collar.

B. Lift center mast pole



Insert additional mast sections as depicted

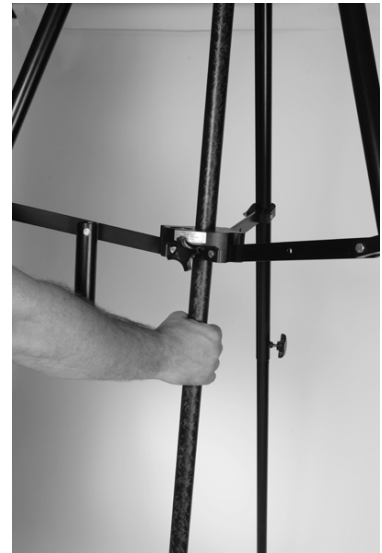
C.



Lift each mast section high enough as to permit room for insertion of subsequent mast sections.

As each mast section is inserted to height, the turn handle may be used to secure the mast in place.

D.



6. Adjusting The Center Mast Poles

A. Adjusting the ball plunger insert.



Front

Ball Plunger Screw

Each mast section has an adjustable ball plunger on the tip. The ball plunger may be adjusted using a flat head screwdriver. This will reduce rotation of the mast sections. If the ball plunger is over tightened the mast section will not nest.

Ball Plunger



Back

7. Staking The Guy Ropes

A. Position the ground stakes



Retrieve the hammer and ground stakes and align the stakes out away from the mast in such a manner as the stake coincides with the pattern on the top of the pulley. Each guy stake should align 90 degrees away from the stakes on the left and right.

Drive each ground stake into the ground at a 45 degree angle away from the tripod. Make sure that the ring on the ground stake is facing the tripod.

B. Clip guy ropes to the ground stakes



RULES OF GUYING

For optimal stability, you should always guy out at least 2/3 of the height of the mast away from the base of the tripod.

28 foot mast - guy out 18 feet from tripod base
32 foot mast - guy out 21 feet from tripod base
36 foot mast - guy out 24 feet from tripod base
40 foot mast - guy out 27 feet from tripod base

DANGER! Contact with overhead wires or power lines can result in serious bodily injury or death

8. Inserting The Base Pole

A. Insert the Base Pole with base plate attached under the last mast section.



Insert the base pole into the bottom of the last center mast section and loosen the turn knob letting the full weight of the mast rest on the base pole.

9. Complete Guying The Mast

DANGER! Do not over tighten the guy ropes

When guying the AntennaMast be sure not to over tighten the guy ropes. The objective of guying is to stabilize the center mast section, reduce masthead sway, and provide stability during wind loading. If the guy ropes are over tightened the downward load on the mast is increased and the overall load capacity of the mast is reduced and the AntennaMast can become unstable.

A. Adjust the guy rope



Adjust the guy rope by sliding it towards the mast to tighten and away from the mast to loosen. To lock the guy rope, place loop the guy rope over the two hooks on the inside of the rope stay.

Apply tension on the guy rope by sliding rope stay. Guy rope should be tangle free and snug. Be sure that the center mast sections remain straight and perpendicular.

B. Take up the slack

It may be necessary to remove the slack from the guy ropes in order to adjust the tension correctly. Simply pull the knotted end of the guy rope through the rope stay until you have removed the slack from the guy rope.



How To Dismantle Your AntennaMast

1. Slightly loosen the guy ropes and then loosen the turn knob and remove the base pole. Lifting slightly on the base pole allow enough space below to remove it from the mast. Tighten the turn knob so that the next pole remains in place.
2. Remove the next mast section using the same process.
3. Repeat the process for the remaining mast sections using the same procedure as above until all of the mast sections have been removed. Store the mast sections in the carry bag.
4. Unclip the guy ropes from the ground stakes and wind them on to the rope stay until ready to unclip from the guy collar. Remove the ground stakes and store them along with the guy ropes in the carry bag.
5. Remove the guy collar.
6. Remove the ground stakes from the tripod and store them in the carry bag.
7. Collapse the tripod and allow the nested legs to recess into the tripod legs. Fold the tripod and tighten the turn handle on the tripod legs. You may find it easier and quicker to store the tripod with the base plates attached. Store the tripod in the carry bag.